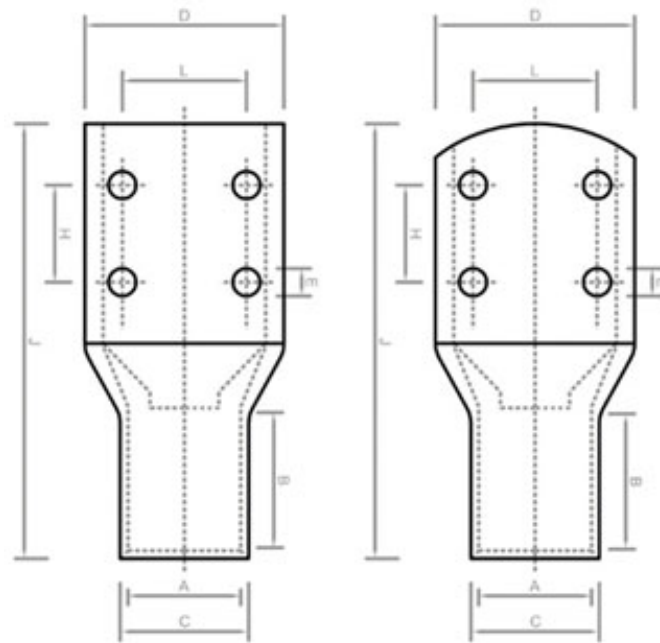


Products

- :: Brass BW 2 Parts Cable Glands
- :: Brass BW3 Parts Cable Glands
- :: Brass CW Cable Glands
- :: Brass CX Type Cable Glands
- :: Brass A2 Type Cable Glands
- :: Brass E1W Cable Glands
- :: Brass CXT Cable Glands
- :: Brass Marine Cable Glands
- :: Brass Metric Strain Relief Cable glands
- :: Brass Wiping Cable Glands
- :: Brass PG Cable Glands
- :: Brass Cable Glands Accessories

Four Hole Compression Cable Terminal Ends



Products

- :: Brass Flexible Conduit Fittings Cable Glands
- :: Brass Lock Nuts
- :: Brass Stop Plugs Blind Plugs
- :: Brass Thread Reducers Enlargers Converters
- :: Copper Cable Lugs and Terminals
- :: Conduit Fittings Accessories
- :: Rubber Grommets For Conduit Boxes
- :: Brass Cable Gland Selection Chart
- :: Brass Neutral Links Neutral Bars
- :: Brass Terminal Blocks
- :: Brass Terminals Terminal Bars

- MANUFACTURED FROM PURE ELECTROLYTIC COPPER.
- COPPER LUGS & CABLE TERMINALS FROM 300 TO 1000 MM² WITH DIFFERENT STUD HOLE SIZES AS REQUIRED.
- LEAD FREE ELECTRO TIN PLATED TO PREVENT ATMOSPHERIC CORROSION.
- CABLE LUGS ARE FULLY ANNEALED TO GUARANTEE OPTIMUM DUCTILITY.
- UL, CUL CERTIFIED PRODUCT.

COPPER COMPRESSION TYPE FOUR HOLE TUBULAR TERMINAL

CAT.NO	AREA MM2	E	DIMENSIONS (MM2)						
			A	C	D	B	L	H	J
ZCT300 4E8	300	8.5	23.5	30	56	42	35	25	101
ZCT300 4E10		10.5	23.5	30	56	42	35	25	101
ZCT400 4E8	400	8.5	28.5	36.5	56	44	35	25	114
ZCT400 4E10		10.5	28.5	36.5	56	44	35	25	114
ZCT500 4E8	500	8.5	30	39	56	48	35	25	124
ZCT500 4E10		10.5	30	39	56	48	35	25	124
ZCT630 4E8	630	8.5	35	45	65	56	35	25	144
ZCT630 4E10		10.5	35	45	65	56	35	25	144
ZCT800 4E8	800	8.5	35	45	63.8	58	35	25	148
ZCT800 4E10		8.5	35	45	63.8	58	35	25	148
ZCT1000 4E8	1000	10.5	43	56.2	78.5	90	35	25	250
ZCT1000 4E10		10.5	43	56.2	78.5	90	35	25	250

Brass Cable Glands India

Click Here to Visit Our Website : www.cable-glands-brass.com

Plot 10 - B GIDC Industrial Estate,
Jamnagr, Gujarat 361005 India.

Tel No : +91-22- 43449300, +91-22- 43449323

Fax No : +91- 22-22834046, +91-22- 40023682

